

HIGHLIGHTS OF PRESCRIBING INFORMATION

These highlights do not include all the information needed to use ELIGARD® safely and effectively. See full prescribing information for ELIGARD.

ELIGARD (leuprolide acetate) for injectable suspension, for subcutaneous use

Initial U.S. Approval: 2002

RECENT MAJOR CHANGES

Dosage and Administration (2) 05/2024
Indications and Usage (1) 07/2023

INDICATIONS AND USAGE

ELIGARD is a gonadotropin releasing hormone (GnRH) agonist indicated for the treatment of advanced prostate cancer. (1)

DOSAGE AND ADMINISTRATION

ELIGARD is administered subcutaneously based on the following recommended dose and schedule:

- 7.5 mg subcutaneously every month (2.1)
- 22.5 mg subcutaneously every 3 months (2.1)
- 30 mg subcutaneously every 4 months (2.1)
- 45 mg subcutaneously every 6 months (2.1)

See Full Prescribing Information for preparation and administration instructions. (2.2, 2.3)

DOSAGE FORMS AND STRENGTHS

- Injectable suspension: 7.5 mg (3)
- Injectable suspension: 22.5 mg (3)
- Injectable suspension: 30 mg (3)
- Injectable suspension: 45 mg (3)

CONTRAINDICATIONS

- Known hypersensitivity to GnRH, GnRH agonist analogs or any of the components of ELIGARD (4)

WARNINGS AND PRECAUTIONS

- **Tumor Flare:** Transient increase in serum levels of testosterone during treatment may result in worsening of symptoms or onset of new signs and symptoms during the first few weeks of treatment, including bone pain, neuropathy, hematuria, bladder outlet obstruction, ureteral obstruction, or spinal cord compression. Monitor patients at risk closely and manage as appropriate. (5.1, 5.2)
- **Hyperglycemia and diabetes:** Hyperglycemia and an increased risk of developing diabetes have been reported in men receiving GnRH analogs. Monitor blood glucose level and manage according to current clinical practice. (5.3)
- **Cardiovascular diseases:** Increased risk of myocardial infarction, sudden cardiac death and stroke has been reported in men. Monitor for cardiovascular disease and manage according to current clinical practice. (5.4)
- **Effect on QT/QTc Interval:** Androgen deprivation therapy may prolong the QT interval. Consider risks and benefits. (5.5)
- **Convulsions** have been observed in patients with or without a history of predisposing factors. Manage convulsions according to the current clinical practice. (5.6)
- **Embryo-Fetal Toxicity:** May cause fetal harm. (5.7, 8.1)

ADVERSE REACTIONS

- Most common adverse reactions in clinical studies (incidence \geq 5%): Malaise, fatigue, hot flashes/sweats, and testicular atrophy. (6.1)
- As with other GnRH agonists, other adverse reactions, including decreased bone density and rare cases of pituitary apoplexy have been reported. (6.1, 6.2)

To report SUSPECTED ADVERSE REACTIONS, contact Tolmar at 1-888-354-4273 or FDA at 1-800-FDA-1088 or www.fda.gov/medwatch.

USE IN SPECIFIC POPULATIONS

- Females and males of reproductive potential: ELIGARD may impair fertility. (8.3)
- Safety and effectiveness in pediatric patients have not been established. (8.4)

See 17 for PATIENT COUNSELING INFORMATION.

Revised: 05/2024

FULL PRESCRIBING INFORMATION: CONTENTS*

1 INDICATIONS AND USAGE

2 DOSAGE AND ADMINISTRATION

- 2.1 Recommended Dosage
- 2.2 Preparation Instructions
- 2.3 Administration Instructions

3 DOSAGE FORMS AND STRENGTHS

4 CONTRAINDICATIONS

5 WARNINGS AND PRECAUTIONS

- 5.1 Tumor Flare
- 5.2 Laboratory Tests
- 5.3 Hyperglycemia and Diabetes
- 5.4 Cardiovascular Diseases
- 5.5 Effect on QT/QTc Interval
- 5.6 Convulsions
- 5.7 Embryo-Fetal Toxicity

6 ADVERSE REACTIONS

- 6.1 Clinical Trial Experience
- 6.2 Postmarketing Experience

8 USE IN SPECIFIC POPULATIONS

- 8.1 Pregnancy
- 8.2 Lactation
- 8.3 Females and Males of Reproductive Potential
- 8.4 Pediatric Use
- 8.5 Geriatric Use

11 DESCRIPTION

12 CLINICAL PHARMACOLOGY

- 12.1 Mechanism of Action
- 12.2 Pharmacodynamics
- 12.3 Pharmacokinetics

13 NONCLINICAL TOXICOLOGY

- 13.1 Carcinogenesis, Mutagenesis, Impairment of Fertility

14 CLINICAL STUDIES

16 HOW SUPPLIED/STORAGE AND HANDLING

17 PATIENT COUNSELING INFORMATION

*Sections or subsections omitted from the full prescribing information are not listed.

FULL PRESCRIBING INFORMATION

1 INDICATIONS AND USAGE

ELIGARD is indicated for the treatment of advanced prostate cancer.

2 DOSAGE AND ADMINISTRATION

2.1 Recommended Dosage

ELIGARD is administered **subcutaneously** and provides continuous release of leuprolide acetate over a one-, three-, four-, or six-month treatment period (Table 1). ELIGARD must be administered by a healthcare provider. The injection delivers the dose of leuprolide acetate incorporated in a polymer formulation.

Table 1. ELIGARD Recommended Dosing

Dosage	7.5 mg	22.5 mg	30 mg	45 mg
Recommended dose	1 injection every month	1 injection every 3 months	1 injection every 4 months	1 injection every 6 months

As with other drugs administered by subcutaneous injection, the injection site should vary periodically. The specific injection location should be an area with sufficient soft or loose subcutaneous tissue. In clinical trials, the injections were administered in the upper- or mid-abdominal area. Avoid areas with brawny or fibrous subcutaneous tissue or locations that could be rubbed or compressed (i.e., with a belt or clothing waistband).

2.2 Preparation Instructions

Use aseptic technique throughout the procedure. As with other similar agents, the use of gloves is recommended during mixing and administration. Allow the product to reach room temperature before mixing. Once mixed, the product must be administered within 30 minutes or it should be discarded.

ELIGARD is packaged in a carton containing:

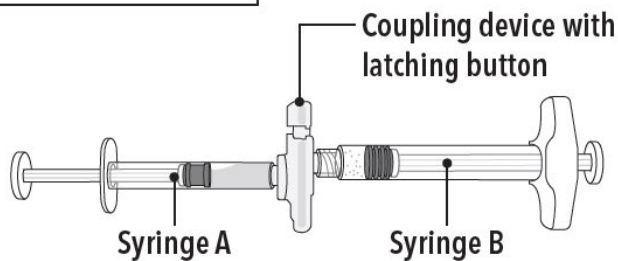
- Tray containing pre-connected syringe system and desiccant pack
- Prescribing information
- Sterile safety needle and cap (located under the tray in carton)

Follow the detailed instructions below to ensure correct preparation of ELIGARD prior to administration:

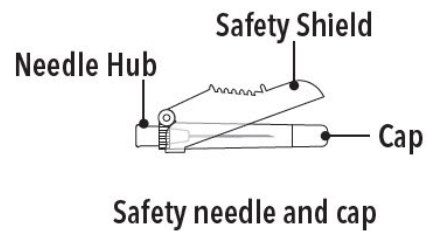
Step 1

On a clean field open the tray by tearing off the foil from the corner and remove the contents. Discard the desiccant pack. Remove the pre-connected syringe system from the tray. Open the sterile safety needle package by peeling back the paper tab. **Note:** Syringe A and Syringe B should not be lined-up yet. The product should only be administered with the co-packaged, sterile safety needle.

Tray Contents



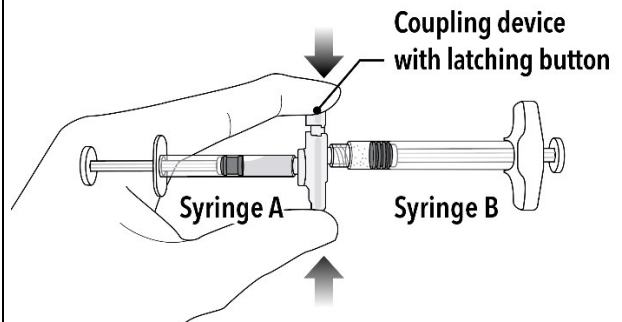
Under the Tray



Step 2

Grasp the latching button on the coupling device with your finger and thumb and press until you hear a snapping sound. The two syringes will be aligned.

Do not bend the pre-connected syringe system.



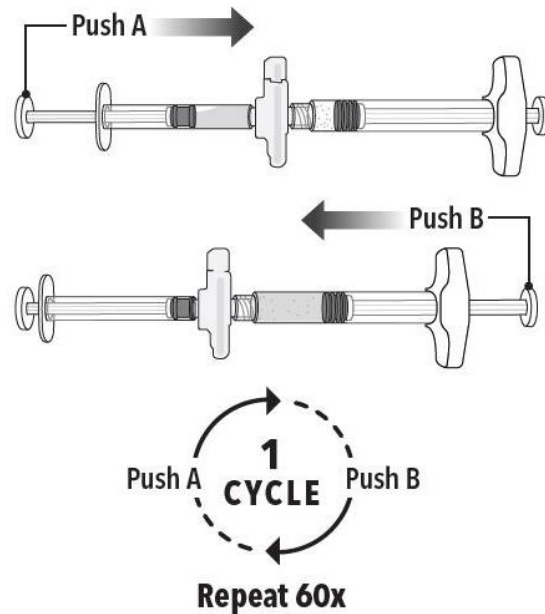
Step 3

Holding the syringes in a horizontal position, transfer the liquid contents of Syringe A into the leuprolide acetate powder contained in Syringe B. **Thoroughly mix the product for 60 cycles by pushing the contents back and forth between both syringes to obtain a uniform suspension.**

- A cycle is one push of the Syringe A plunger and one push of the Syringe B plunger.
- When thoroughly mixed, the suspension will appear light tan to tan (ELIGARD 7.5 mg) or colorless to pale yellow (ELIGARD 22.5 mg, 30 mg, and 45 mg).

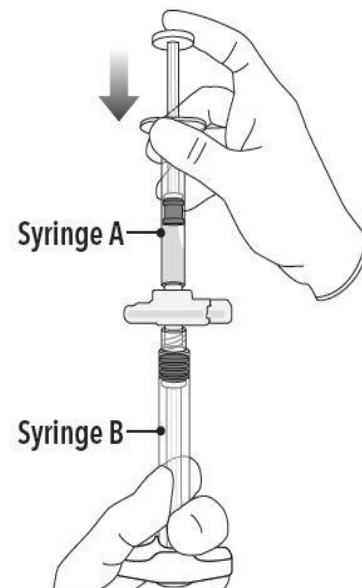
Note: Product must be mixed as described; shaking will NOT provide adequate mixing.

Do not bend.



Step 4

After mixing, hold the syringes vertically (upright) with Syringe B (wide syringe) on the bottom. The syringes should remain securely coupled. Transfer all of the mixed product into Syringe B by depressing the Syringe A plunger and slightly withdrawing the Syringe B plunger.

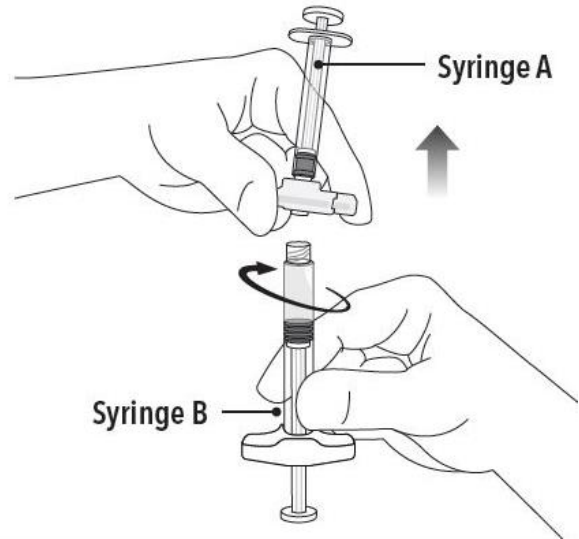


Step 5

While ensuring the Syringe A plunger is fully pushed down, hold the coupling device and unscrew Syringe B. This will disconnect Syringe B from the coupling device. Syringe A will remain attached to the coupling device.

Note: Small air bubbles will remain in the formulation – this is acceptable.

Do not purge the air bubbles from Syringe B as product may be lost!

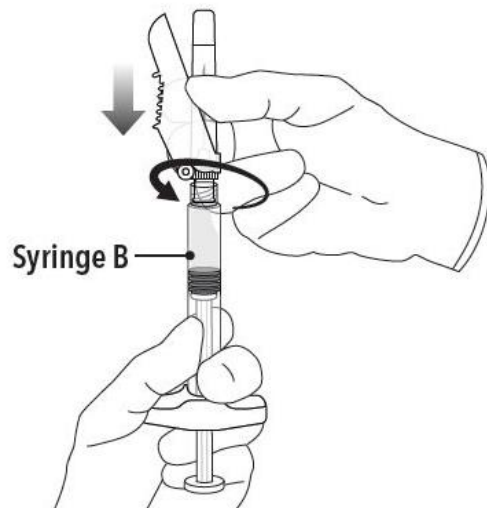


Step 6

Continue to hold Syringe B upright with the open end at the top. Hold back the white plunger on Syringe B to prevent loss of the product, and attach the safety needle and cap (the safety needle is located under the tray). Gently screw clockwise with approximately a three-quarter turn until the safety needle and cap are secure.

Do not overtighten, as the needle hub may become damaged which could result in leakage of the product during injection.

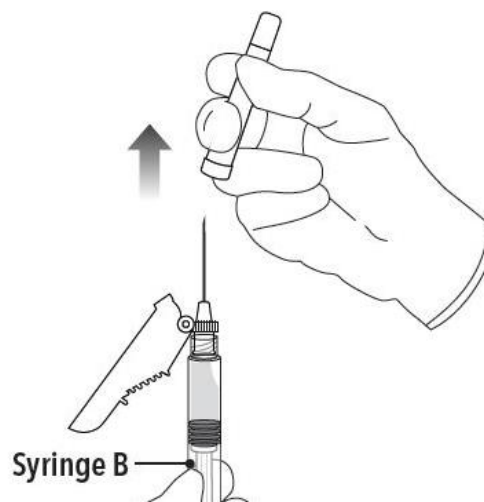
The safety shield may also be damaged if the safety needle and cap are screwed with too much force.



Step 7

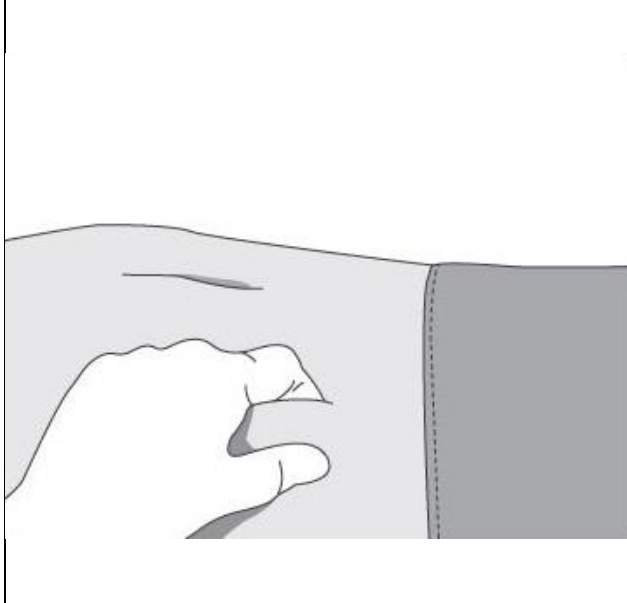
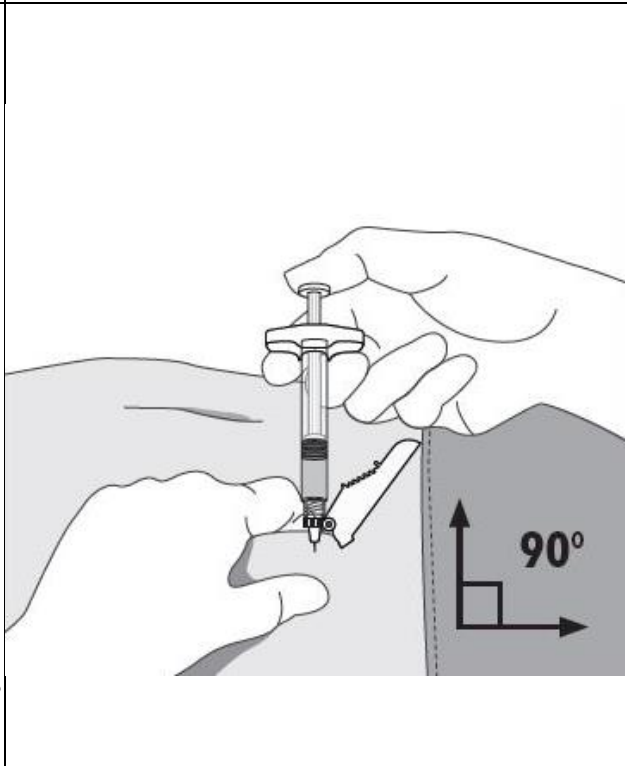
Move the safety shield away from the needle and towards the syringe.

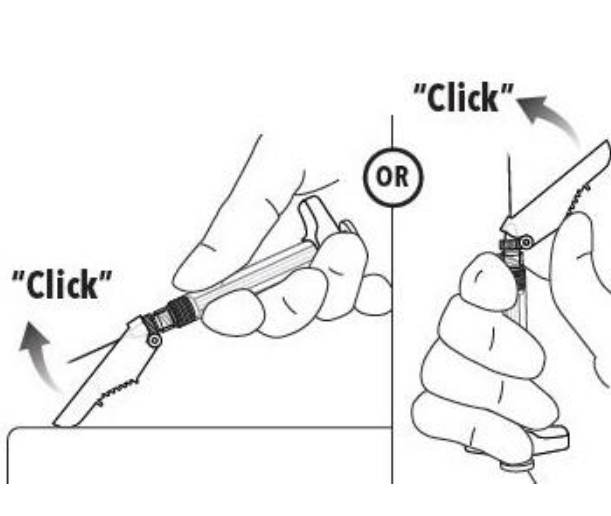
Pull off the cap immediately prior to administration.



Note: Should the needle hub appear to be damaged, or leak, the product should NOT be used. The damaged safety needle and cap should NOT be replaced and the product should NOT be injected. In the event of damage to the needle hub, use a new replacement ELIGARD carton.

2.3 Administration Instructions

<ol style="list-style-type: none">1. Select an injection site on the abdomen, upper buttocks, or another location with adequate amounts of subcutaneous tissue that does not have excessive pigment, nodules, lesions, or hair and hasn't recently been used.2. Cleanse the injection-site area with an alcohol swab (not enclosed).3. Using the thumb and forefinger, grab and bunch the area of skin around the injection site.	 An illustration showing a hand pinching a fold of skin on an arm. The hand is positioned to grasp the skin between the thumb and forefinger, creating a small pocket of tissue.
<ol style="list-style-type: none">4. Using your dominant hand, insert the needle quickly at a 90° angle to the skin surface. The depth of penetration will depend on the amount and fullness of the subcutaneous tissue and the length of the needle. After the needle is inserted, release the skin.5. Inject the drug using a slow, steady push and press down on the plunger until the syringe is empty. Make sure all the drug has been injected before removing the needle.6. Withdraw the needle quickly at the same 90° angle used for insertion.	 An illustration showing a hand injecting a syringe into a skin fold. The syringe is held at a 90-degree angle to the skin surface. A right-angle symbol with the text '90°' is shown to indicate the angle of insertion. The hand is shown pushing the plunger of the syringe.

<p>7. Immediately following the withdrawal of the needle, activate the safety shield using a finger/thumb or flat surface and push until it completely covers the needle tip and locks into place.</p> <p>8. An audible and tactile “click” verifies a locked position.</p> <p>9. Check to confirm the safety shield is fully engaged. Discard all components safely in an appropriate biohazard container.</p>	
---	--

3 DOSAGE FORMS AND STRENGTHS

ELIGARD is an injectable suspension of leuprolide acetate available in a pre-connected syringe system and packaged with a sterile safety needle and cap (Table 2), a desiccant, prescribing information and instructions for use. The pre-connected syringe system consists of syringe A and syringe B connected using a coupling device. Syringe A contains the in situ polymeric extended release technology and the syringe B contains leuprolide acetate powder. When reconstituted, ELIGARD is administered as a single dose. Refer to Table 10 for details of the description of the dosage form before and after mixing [see *How Supplied/Storage and Handling (16)*].

Table 2. Specifications for ELIGARD Sterile Safety Needle and Cap

ELIGARD strength	Gauge	Length
7.5 mg	20-gauge	5/8-inch
22.5 mg	20-gauge	5/8-inch
30 mg	20-gauge	5/8-inch
45 mg	18-gauge	5/8-inch

4 CONTRAINDICATIONS

Hypersensitivity

ELIGARD is contraindicated in patients with hypersensitivity to GnRH, GnRH agonist analogs or any of the components of ELIGARD. Anaphylactic reactions to synthetic GnRH or GnRH agonist analogs have been reported in the literature.

5 WARNINGS AND PRECAUTIONS

5.1 Tumor Flare

ELIGARD 7.5 mg, 22.5 mg, and 30 mg like other GnRH agonists, causes a transient increase in serum concentrations of testosterone during the first week of treatment. ELIGARD 45 mg causes a transient increase in serum concentrations of testosterone during the first two weeks of treatment. Patients may experience worsening of symptoms or onset of new signs and symptoms during the first few weeks of treatment, including bone pain, neuropathy, hematuria, or bladder outlet obstruction.

Cases of ureteral obstruction and/or spinal cord compression, which may contribute to paralysis with or without fatal complications, have been observed in the treatment of advanced prostate cancer using GnRH agonists.

Patients with metastatic vertebral lesions and/or with urinary tract obstruction should be closely observed during the first few weeks of therapy. If spinal cord compression or ureteral obstruction develops, standard treatment of these complications should be instituted.

5.2 Laboratory Tests

Monitor ELIGARD response by periodic measurement of serum concentrations of testosterone and prostate specific antigen.

In the majority of patients, testosterone levels increased above Baseline during the first week, declining thereafter to Baseline levels or below by the end of the second or third week. Castrate levels were generally reached within two to four weeks.

Castrate testosterone levels were maintained for the duration of the treatment with ELIGARD 7.5 mg. No increases to above the castrate level occurred in any of the patients.

Castrate levels were generally maintained for the duration of treatment with ELIGARD 22.5 mg.

Once castrate levels were achieved with ELIGARD 30 mg, most (86/89) patients remained suppressed throughout the study.

Once castrate levels were achieved with ELIGARD 45 mg, one patient (< 1%) experienced a breakthrough, with testosterone levels > 50 ng/dL.

Results of testosterone determinations are dependent on assay methodology. It is advisable to be aware of the type and precision of the assay methodology to make appropriate clinical and therapeutic decisions.

Drug/Laboratory Test Interactions: Therapy with ELIGARD results in suppression of the pituitary-gonadal system. Results of diagnostic tests of pituitary gonadotropic and gonadal functions conducted during and after ELIGARD therapy may be affected.

5.3 Hyperglycemia and Diabetes

Hyperglycemia and an increased risk of developing diabetes have been reported in men receiving GnRH agonists. Hyperglycemia may represent development of diabetes mellitus or worsening of glycemic control in patients with diabetes. Monitor blood glucose and/or glycosylated hemoglobin (HbA1c) periodically in patients receiving a GnRH agonist and manage with current practice for treatment of hyperglycemia or diabetes.

5.4 Cardiovascular Diseases

Increased risk of developing myocardial infarction, sudden cardiac death and stroke has been reported in association with use of GnRH agonists in men. The risk appears low based on the reported odds ratios, and should be evaluated carefully along with cardiovascular risk factors when determining a treatment for patients with prostate cancer. Patients receiving a GnRH agonist should be monitored for symptoms and signs suggestive of development of cardiovascular disease and be managed according to current clinical practice.

5.5 Effect on QT/QTc Interval

Androgen deprivation therapy may prolong the QT/QTc interval. Providers should consider whether the benefits of androgen deprivation therapy outweigh the potential risks in patients with congenital long QT syndrome, congestive heart failure, frequent electrolyte abnormalities, and in patients taking drugs known to prolong the QT interval. Electrolyte abnormalities should be corrected. Consider periodic monitoring of electrocardiograms and electrolytes.

5.6 Convulsions

Postmarketing reports of convulsions have been observed in patients on leuprolide acetate therapy. These included patients with a history of seizures, epilepsy, cerebrovascular disorders, central nervous system anomalies or tumors, and in patients on concomitant medications that have been associated with convulsions such as bupropion and SSRIs. Convulsions have also been reported in patients in the absence of any of the conditions mentioned above. Patients receiving a GnRH agonist who experience convulsion should be managed according to current clinical practice.

5.7 Embryo-Fetal Toxicity

Based on findings in animal studies and mechanism of action, ELIGARD may cause fetal harm when administered to a pregnant woman. In animal developmental and reproductive studies,

major fetal abnormalities were observed after administration of leuprolide acetate throughout gestation in rats. Advise pregnant patients and females of reproductive potential of the potential risk to the fetus [see *Use in Specific Populations (8.1)*, *Clinical Pharmacology (12.1)*].

6 ADVERSE REACTIONS

The following clinically significant adverse reactions are described elsewhere in the labeling:

- Tumor Flare [see *Warnings and Precautions (5.1)*]
- Hyperglycemia and Diabetes [see *Warnings and Precautions (5.3)*]
- Cardiovascular Disease [see *Warnings and Precautions (5.4)*]
- Effect on QT/QTc Interval [see *Warnings and Precautions (5.5)*]
- Convulsions [see *Warnings and Precautions (5.6)*]

6.1 Clinical Trial Experience

Because clinical trials are conducted under widely varying conditions, adverse reaction rates observed in the clinical trials of a drug cannot be directly compared to rates in the clinical trials of another drug and may not reflect the rates observed in practice.

The safety of all ELIGARD formulations was evaluated in clinical trials involving patients with advanced prostate cancer. In addition, the safety of ELIGARD 7.5 mg was evaluated in 8 surgically castrated males (Table 4). ELIGARD, like other GnRH analogs, caused a transient increase in serum testosterone concentrations during the first one to two weeks of treatment. Therefore, potential exacerbations of signs and symptoms of the disease during the first weeks of treatment are of concern in patients with vertebral metastases and/or urinary obstruction or hematuria. If these conditions are aggravated, it may lead to neurological problems such as weakness and/or paresthesia of the lower limbs or worsening of urinary symptoms [see *Warnings and Precautions (5.2)*].

During the clinical trials, injection sites were closely monitored. Refer to Table 3 for a summary of reported injection site adverse reactions.

Table 3. Reported Injection Site Adverse Reactions

ELIGARD	7.5 mg	22.5 mg	30 mg	45 mg
Study number	AGL9904	AGL9909	AGL0001	AGL0205
Number of patients	120	117	90	111
Treatment	1 injection every month up to 6 months	1 injection every 3 months up to 6 months	1 injection every 4 months up to 8 months	1 injection every 6 months up to 12 months
Number of injections	716	230	175	217
Transient burning/stinging	248 (34.6%) injections; 84% reported as mild	50 (21.7%) injections; 86% reported as mild	35 (20%) injections; 100% reported as mild ³	35 (16%) injections; 91.4% reported as mild
Pain (generally brief and mild)	4.3% of injections (18.3% of patients)	3.5% of injections (6.0% of patients)	2.3% of injections ² (3.3% of patients)	4.6% of injections ⁴
Erythema (generally brief and mild)	2.6% of injections (12.5% of patients)	0.9% of injections ¹ (1.7% of patients)	1.1% of injections (2.2% of patients)	-
Bruising (mild)	2.5% of injections (11.7% of patients)	1.7% of injections (3.4% of patients)	-	2.3% of injections ⁵
Pruritus	1.4% of injections (9.2% of patients)	0.4% of injections (0.9% of patients)	-	-
Induration	0.4% of injections (2.5% of patients)	-	-	-
Ulceration	0.1% of injections (> 0.8% of patients)	-	-	-

1. Erythema was reported following 2 injections of ELIGARD 22.5 mg. One report characterized the erythema as mild and it resolved within 7 days. The other report characterized the erythema as moderate and it resolved within 15 days. Neither patient experienced erythema at multiple injection times.
2. A single reaction reported as moderate pain resolved within two minutes and all 3 mild pain reactions resolved within several days following injection of ELIGARD 30 mg.
3. Following injection of ELIGARD 30 mg, three of the 35 burning/stinging reactions were reported as moderate.
4. Transient pain was reported as mild in intensity in nine of ten (90%) events and moderate in intensity in one of ten (10%) events following injection of ELIGARD 45 mg.
5. Mild bruising was reported following 5 (2.3%) study injections and moderate bruising was reported following 2 (<1%) study injections of ELIGARD 45 mg.

These localized adverse reactions were non-recurrent over time. No patient discontinued therapy due to an injection site adverse reaction.

The following possibly or probably related systemic adverse reactions occurred during clinical trials with ELIGARD, and were reported in > 2% of patients (Table 4). Reactions considered not drug-related are excluded.

Table 4. Summary of Possible or Probably Related Systemic Adverse Reactions Reported by > 2% of Patients Treated with ELIGARD

ELIGARD		7.5 mg	7.5 mg	22.5 mg	30 mg	45 mg
Study number		AGL9904	AGL9802	AGL9909	AGL0001	AGL0205
Number of patients		120	8	117	90	111
Treatment		1 injection every month up to 6 months	1 injection (surgically castrated patients)	1 injection every 3 months up to 6 months	1 injection every 4 months up to 8 months	1 injection every 6 months up to 12 months
Body system	Adverse Reaction	Number (percent)				
Body as a whole	Malaise and fatigue	21 (17.5%)	-	7 (6.0%)	12 (13.3%)	13 (11.7%)
	Weakness	-	-	-	-	4 (3.6%)
Nervous system	Dizziness	4 (3.3%)	-	-	4 (4.4%)	-
Vascular	Hot flashes/sweats	68 (56.7%)*	2 (25.0%)*	66 (56.4%)*	66 (73.3%)*	64 (57.7%)*
Renal/urinary	Urinary frequency	-	-	3 (2.6%)	2 (2.2%)	-
	Nocturia	-	-	-	2 (2.2%)	-
Gastrointestinal	Nausea	-	-	4 (3.4%)	2 (2.2%)	-
	Gastroenteritis/colitis	3 (2.5%)	-	-	-	-
Skin	Pruritus	-	-	3 (2.6%)	-	-
	Clamminess	-	-	-	4 (4.4%)*	-
	Night sweats	-	-	-	3 (3.3%)*	3 (2.7%)*
	Alopecia	-	-	-	2 (2.2%)	-
Musculoskeletal	Arthralgia	-	-	4 (3.4%)	-	-
	Myalgia	-	-	-	2 (2.2%)	5 (4.5%)
	Pain in limb	-	-	-	-	3 (2.7%)
Reproductive	Testicular atrophy	6 (5.0%)*	-	-	4 (4.4%)*	8 (7.2%)*
	Gynecomastia	-	-	-	2 (2.2%)*	4 (3.6%)*
	Testicular pain	-	-	-	2 (2.2%)	-
Psychiatric	Decreased libido	-	-	-	3 (3.3%)*	-

*Expected pharmacological consequences of testosterone suppression.

In the patient populations studied with ELIGARD 7.5 mg, a total of 86 hot flashes/sweats adverse reactions were reported in 70 patients. Of these, 71 reactions (83%) were mild; 14 (16%) were moderate; 1 (1%) was severe.

In the patient population studied with ELIGARD 22.5 mg, a total of 84 hot flashes/sweats adverse reactions were reported in 66 patients. Of these, 73 reactions (87%) were mild; 11 (13%) were moderate; none were severe.

In the patient population studied with ELIGARD 30 mg, a total of 75 hot flash adverse reactions were reported in 66 patients. Of these, 57 reactions (76%) were mild; 16 (21%) were moderate; 2 (3%) were severe.

In the patient population studied with ELIGARD 45 mg, a total of 89 hot flash adverse reactions were reported in 64 patients. Of these, 62 reactions (70%) were mild; 27 (30%) were moderate; none were severe.

In addition, the following possibly or probably related systemic adverse reactions were reported by < 2% of the patients treated with ELIGARD in these clinical studies.

Body system	Adverse Reactions
General	Sweating, insomnia, syncope, rigors, weakness, lethargy
Gastrointestinal	Flatulence, constipation, dyspepsia
Hematologic	Decreased red blood cell count, hematocrit and hemoglobin
Metabolic	Weight gain
Musculoskeletal	Tremor, backache, joint pain, muscle atrophy, limb pain
Nervous	Disturbance of smell and taste, depression, vertigo
Psychiatric	Insomnia, depression, loss of libido*
Renal/urinary	Difficulties with urination, pain on urination, scanty urination, bladder spasm, blood in urine, urinary retention, urinary urgency, incontinence, nocturia, nocturia aggravated
Reproductive/ Urogenital	Testicular soreness/pain, impotence*, decreased libido*, gynecomastia*, breast soreness/tenderness*, testicular atrophy*, erectile dysfunction, penile disorder*, reduced penis size
Skin	Alopecia, clamminess, night sweats*, sweating increased*
Vascular	Hypertension, hypotension

* Expected pharmacological consequences of testosterone suppression.

Changes in Bone Density: Decreased bone density has been reported in the medical literature in men who have had orchiectomy or who have been treated with a GnRH agonist analog. It can be anticipated that long periods of medical castration in men will have effects on bone density.

6.2 Postmarketing Experience

The following adverse reactions have been identified during post-approval use of ELIGARD. Because these reactions are reported voluntarily from a population of uncertain size, it is not always possible to reliably estimate their frequency or establish a casual relationship to drug exposure.

Pituitary apoplexy- During postmarketing surveillance, rare cases of pituitary apoplexy (a clinical syndrome secondary to infarction of the pituitary gland) have been reported after the administration of gonadotropin-releasing hormone agonists. In a majority of these cases, a pituitary adenoma was diagnosed with a majority of pituitary apoplexy cases occurring within 2 weeks of the first dose, and some within the first hour. In these cases, pituitary apoplexy has presented as sudden headache, vomiting, visual changes, ophthalmoplegia, altered mental status, and sometimes cardiovascular collapse. Immediate medical attention has been required.

Nervous System- Convulsions

Respiratory System- Interstitial lung disease

8 USE IN SPECIFIC POPULATIONS

8.1 Pregnancy

Risk Summary

Based on findings in animal studies and mechanism of action, ELIGARD may cause fetal harm when administered to a pregnant woman [see *Clinical Pharmacology (12.1)*]. There are no available data in pregnant women to inform the drug-associated risk. Expected hormonal changes that occur with ELIGARD treatment increase the risk for pregnancy loss. In animal developmental and reproductive studies, major fetal abnormalities were observed after administration of leuprolide acetate throughout gestation in rats. Advise pregnant patients and females of reproductive potential of the potential risk to the fetus (see *Data*).

Data

Animal Data

In animal developmental and reproductive studies, major fetal abnormalities were observed after administration of leuprolide acetate throughout gestation. There were increased fetal mortality and decreased fetal weights in rats and rabbits. The effects of fetal mortality are expected consequences of the alterations in hormonal levels brought about by this drug.

8.2 Lactation

The safety and efficacy of ELIGARD have not been established in females. There is no information regarding the presence of ELIGARD in human milk, the effects on the breastfed child, or the effects on milk production. Because many drugs are excreted in human milk and because of the potential for serious adverse reactions in a breastfed child from ELIGARD, a decision should be made to discontinue breastfeeding or discontinue the drug, taking into account the importance of the drug to the mother.

8.3 Females and Males of Reproductive Potential

Infertility

Males

Syringe A contains the in situ polymeric extended release technology consisting of a biodegradable poly (DL-lactide-co-glycolide) (PLGH or PLG) polymer formulation dissolved in a biocompatible solvent, *N*-methyl-2-pyrrolidone (NMP) and syringe B contains leuprolide acetate.

Refer to Table 5 for the delivery system composition and reconstituted product formulation for each ELIGARD product.

Table 5. ELIGARD Delivery System Composition and Reconstituted Product Formulation

ELIGARD		7.5 mg	22.5 mg	30 mg	45 mg
In situ polymeric extended release technology	Polymer	PLGH	PLG	PLG	PLG
	Polymer description	Copolymer containing carboxyl endgroups	Copolymer with hexanediol	Copolymer with hexanediol	Copolymer with hexanediol
	Polymer DL-lactide to glycolide molar ratio	50:50	75:25	75:25	85:15
Reconstituted product	Polymer delivered	82.5 mg	158.6 mg	211.5 mg	165 mg
	NMP delivered	160.0 mg	193.9 mg	258.5 mg	165 mg
	Leuprolide acetate delivered	7.5 mg	22.5 mg	30 mg	45 mg
	Approximate Leuprolide free base equivalent	7.0 mg	21 mg	28 mg	42 mg
	Approximate administered formulation weight	250 mg	375 mg	500 mg	375 mg
	Approximate injection volume	0.25 mL	0.375 mL	0.5 mL	0.375 mL

12 CLINICAL PHARMACOLOGY

12.1 Mechanism of Action

Leuprolide acetate, a gonadotropin releasing hormone (GnRH) agonist, acts as an inhibitor of gonadotropin secretion when given continuously in therapeutic doses. Animal and human studies indicate that after an initial stimulation, chronic administration of leuprolide acetate

results in suppression of testicular and ovarian steroidogenesis. This effect is reversible upon discontinuation of drug therapy.

12.2 Pharmacodynamics

Following initial administration, ELIGARD causes an initial increase in serum luteinizing hormone (LH) and follicle stimulating hormone (FSH) levels with subsequent increases in serum levels of testosterone. Administration of ELIGARD leads to sustained suppression of pituitary gonadotropins, and serum levels of testosterone consequently fall into the range normally seen in surgically castrated men approximately 21 days after initiation of therapy. Continuation of therapy with leuprolide acetate in patients with prostate cancer maintained testosterone below the castrate level for up to five years.

Following the first dose of ELIGARD, mean serum testosterone concentrations transiently increased, then fell to below castrate threshold (≤ 50 ng/dL) within three weeks, and generally remained below castrate threshold levels throughout treatment for all ELIGARD concentrations. Mean serum testosterone concentrations fell to ≤ 20 ng/dL within five weeks for all ELIGARD concentrations.

12.3 Pharmacokinetics

Absorption

ELIGARD 7.5 mg

Following a single injection of ELIGARD 7.5 mg for 1-month administration in patients, the mean peak plasma concentration was 25.3 ng/mL (C_{max}) at 5 hours; at the end of the 4 week dosing interval the mean concentration declined to 0.42 ng/mL.

ELIGARD 22.5 mg

Following a single injection of ELIGARD 22.5 mg for 3-month administration in patients, the mean peak plasma concentration was 127 ng/mL (C_{max}) at 5 hours; at the end of the 12 week dosing interval the mean concentration declined to 0.34 ng/mL.

ELIGARD 30 mg

Following a single injection of ELIGARD 30 mg for 4-month administration in patients, the mean peak plasma concentration was 150 ng/mL (C_{max}) at 3.3 hours; at the end of the 16 week dosing interval the mean concentration declined to 0.1 ng/mL.

ELIGARD 45 mg

Following a single injection of ELIGARD 45 mg for 6-month administration in patients, the mean peak plasma concentration was 82 ng/mL at 4.5 hours (C_{max}); at the end of the 24 week dosing interval the mean concentration declined to 0.2 ng/mL.

There was no evidence of significant accumulation during repeated dosing.

Distribution

The mean steady-state volume of distribution of leuprolide following intravenous bolus administration to healthy male volunteers was 27 L. In vitro binding to human plasma proteins ranged from 43% to 49%.

Elimination

After the initial increase following each subcutaneous injection, serum concentration range was 0.1 – 2.00 ng/mL.

In healthy male volunteers, a 1-mg bolus of leuprolide administered intravenously revealed that the mean systemic clearance was 8.34 L/h, with a terminal elimination half-life of approximately 3 hours based on a two compartment model.

Metabolism

No drug metabolism study was conducted with ELIGARD. Upon administration with different leuprolide acetate formulations, the major metabolite of leuprolide acetate is a pentapeptide (M-1) metabolite.

Excretion

No drug excretion study was conducted with ELIGARD.

Specific Populations

Geriatrics [see Use in Specific Populations (8.5)]

Race

In patients studied, mean serum leuprolide concentrations were similar regardless of race. Refer to Table 6 for distribution of study patients by race.

Table 6. Race Characterization of ELIGARD Study Patients (n)

Race	ELIGARD 7.5 mg	ELIGARD 22.5 mg	ELIGARD 30 mg	ELIGARD 45 mg
White	26	19	18	17
Black	-	4	4	7
Hispanic	2	2	2	3

Renal and Hepatic Insufficiency

The pharmacokinetics of ELIGARD in hepatically and renally impaired patients have not been determined.

13 NONCLINICAL TOXICOLOGY

13.1 Carcinogenesis, Mutagenesis, Impairment of Fertility

Two-year carcinogenicity studies were conducted with leuprolide acetate in rats and mice. In rats, a dose-related increase of benign pituitary hyperplasia and benign pituitary adenomas was

noted at 24 months when the drug was administered subcutaneously at high daily doses (0.6 to 4 mg/kg). There was a significant but not dose-related increase of pancreatic islet-cell adenomas in females and of testicular interstitial cell adenomas in males (highest incidence in the low dose group). In mice, no leuprolide acetate-induced tumors or pituitary abnormalities were observed at a dose as high as 60 mg/kg for two years. Patients have been treated with leuprolide acetate for up to three years with doses as high as 10 mg/day and for two years with doses as high as 20 mg/day without demonstrable pituitary abnormalities. No carcinogenicity studies have been conducted with ELIGARD.

Mutagenicity studies have been performed with leuprolide acetate using bacterial and mammalian systems and with ELIGARD 7.5 mg in bacterial systems. These studies provided no evidence of a mutagenic potential.

14 CLINICAL STUDIES

One open-label, multicenter study was conducted with each ELIGARD formulation (7.5 mg, 22.5 mg, 30 mg, and 45 mg) in patients with Jewett stage A through D prostate cancer who were treated with at least a single injection of study drug (Table 7). The efficacy outcome measure was medical castration rate, defined as achieving and maintaining serum testosterone suppression to ≤ 50 ng/dL (Figures 1-4).

During the AGL9904 study using ELIGARD 7.5 mg, once testosterone suppression below 50 ng/dL was achieved, no patients (0%) demonstrated breakthrough (concentration > 50 ng/dL) at any time in the study.

During the AGL9909 study using ELIGARD 22.5 mg, once testosterone suppression below 50 ng/dL was achieved, one patient ($< 1\%$) demonstrated breakthrough following the initial injection; that patient remained below 50 ng/dL following the second injection.

During the AGL0001 study using ELIGARD 30 mg, once testosterone suppression below 50 ng/dL was achieved, three patients (3%) demonstrated breakthrough. In the first of these patients, a single serum testosterone concentration of 53 ng/dL was reported on the day after the second injection. In this patient, suppression below 50 ng/dL was reported for all other time points. In the second patient, a serum testosterone concentration of 66 ng/dL was reported immediately prior to the second injection. This rose to a maximum concentration of 147 ng/dL on the second day after the second injection. In this patient, suppression below 50 ng/dL was again reached on the seventh day after the second injection and was maintained thereafter. In the final patient, serum testosterone concentrations > 50 ng/dL were reported at 2 and at 8 hours after the second injection. Serum testosterone concentration rose to a maximum of 110 ng/dL on the third day after the second injection. In this patient, suppression below 50 ng/dL was again reached eighteen days after the second injection and was maintained until the final day of the study, when a single serum testosterone concentration of 55 ng/dL was reported.

During the AGL0205 study using ELIGARD 45 mg, once testosterone suppression below 50 ng/dL was achieved, one patient ($< 1\%$) demonstrated breakthrough. This patient reached

castrate suppression below 50 ng/dL at Day 21 and remained suppressed until Day 308 when his testosterone level rose to 112 ng/dL. At Month 12 (Day 336), his testosterone was 210 ng/dL.

Table 7. Summary of Patients in ELIGARD Clinical Studies

ELIGARD		7.5 mg	22.5 mg	30 mg	45 mg
Study number		AGL9904	AGL9909	AGL0001	AGL0205
Total number of patients		120 (117 completed)	117 ² (111 completed ³)	90 (82 completed ⁴)	111 (103 completed ⁵)
Jewett stages	Stage A	-	2	2	5
	Stage B	-	19	38	43
	Stage C	89	60	16	19
	Stage D	31	36	34	44
Treatment		6 monthly injections	1 injection (4 patients)	1 injection (5 patients)	1 injection (5 patients)
			2 injections, one every three months (113 patients)	2 injections, one every four months (85 patients)	2 injections, one every six months (106 patients)
Duration of therapy		6 months	6 months	8 months	12 months
Mean testosterone concentration (ng/dL)	Baseline	361.3	367.1	385.5	367.7
	Day 2	574.6 (Day 3)	588.0	610.0	588.6
	Day 14	Below Baseline (Day 10)	Below Baseline	Below Baseline	Below Baseline
	Day 28	21.8	27.7 (Day 21)	17.2	16.7
	Conclusion	6.1	10.1	12.4	12.6
Number of patients with testosterone ≤ 50 ng/dL	Day 28	112 of 119 (94.1%)	115 of 116 (99%)	85 of 89 (96%)	108 of 109 (99.1%)
	Day 35	-	116 (100%)	-	-
	Day 42	118 (100%)	-	89 (100%)	-
	Conclusion	117 ¹ (100%)	111 (100%)	81 (99%)	102 (99%)
Number of patients with testosterone ≤ 20 ng/dL	Day 28	90 of 119 (76%)	94 of 116 (81%)	60 of 89 (67%)	87 of 109 (80%)

- Two patients withdrew for reasons unrelated to drug.
- One patient received less than a full dose at Baseline, never attained castration, and was withdrawn at Day 73 and given an alternate treatment.
- All non-evaluable patients who attained castration by Day 28 maintained castration at each time point up to and including the time of withdrawal.
- One patient withdrew on Day 14. All 7 non-evaluable patients who had achieved castration by Day 28 maintained castration at each time point, up to and including the time of withdrawal.
- Two patients were withdrawn prior to the Month 1 blood draw. One patient did not achieve castration and was withdrawn on Day 85. All 5 non-evaluable patients who attained castration by Day 28, maintained castration at each time point up to and including the time of withdrawal.

Figure 1. ELIGARD 7.5 mg Mean Serum Testosterone Concentrations (n=117)

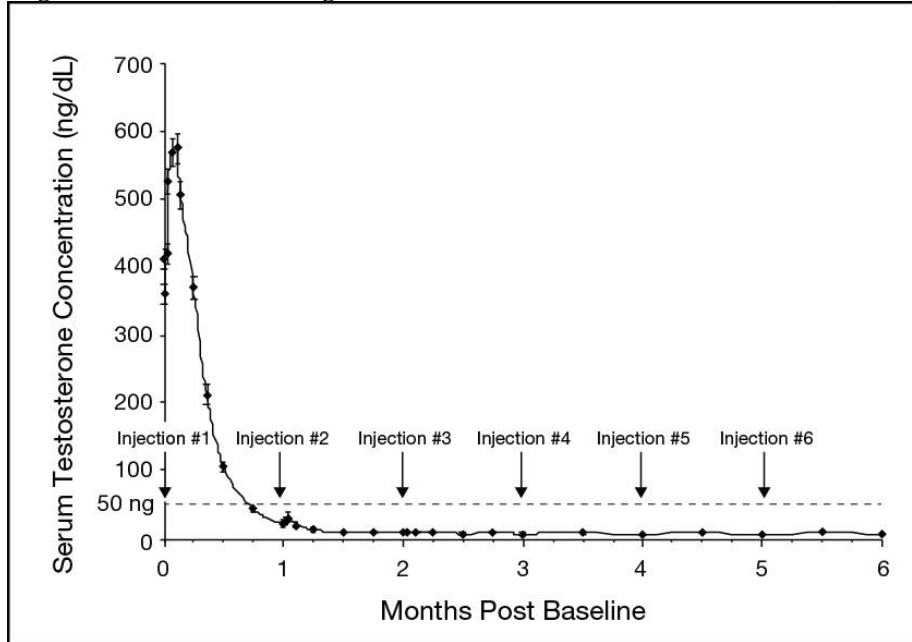


Figure 2. ELIGARD 22.5 mg Mean Serum Testosterone Concentrations (n=111)

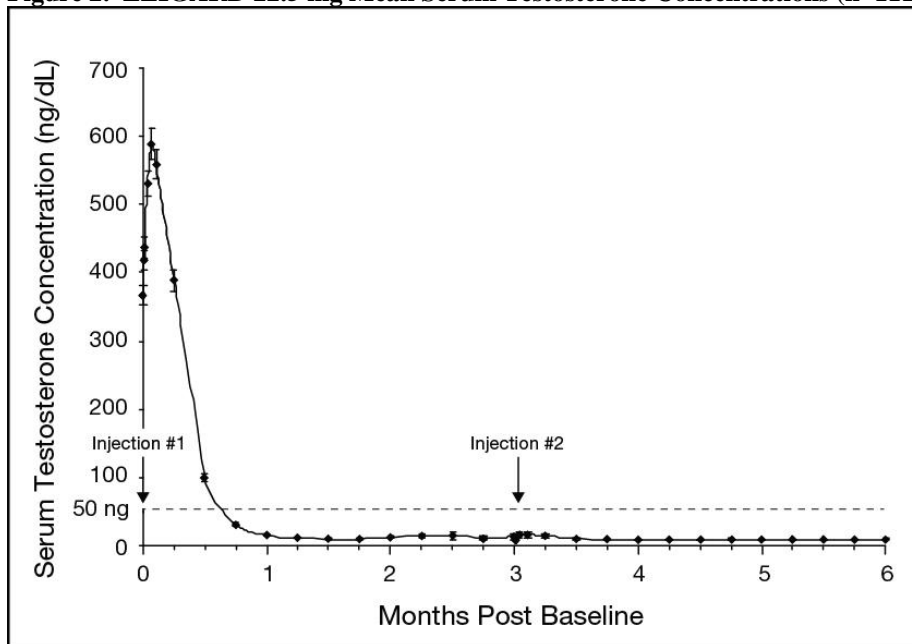


Figure 3. ELIGARD 30 mg Mean Serum Testosterone Concentrations (n=90)

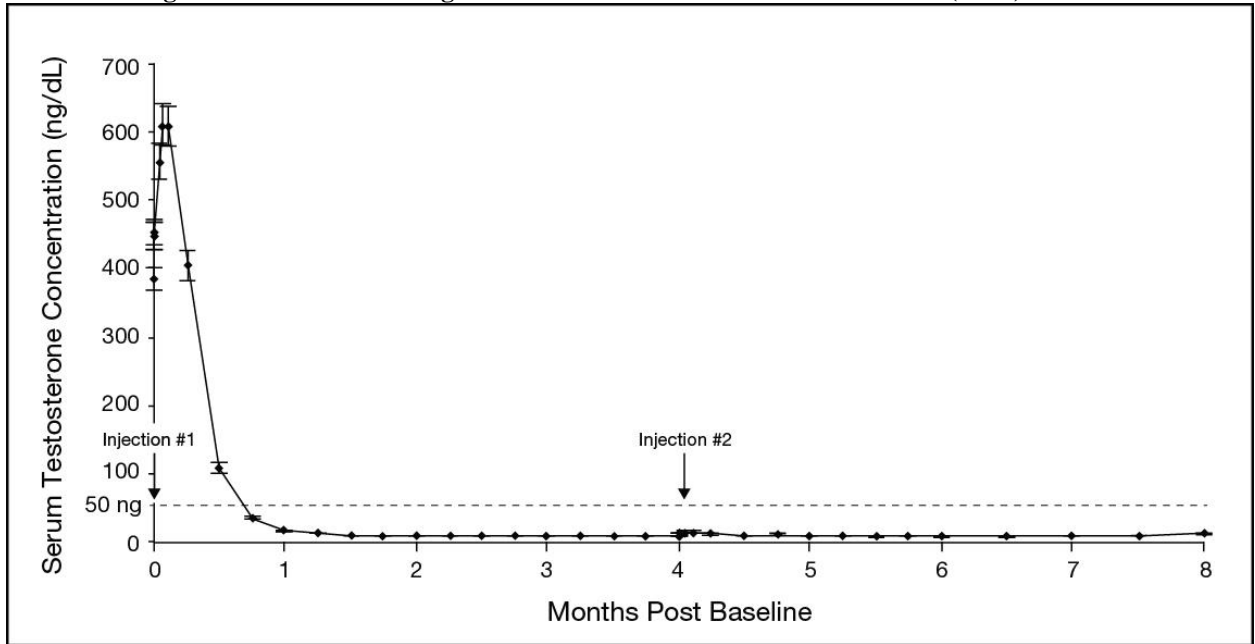
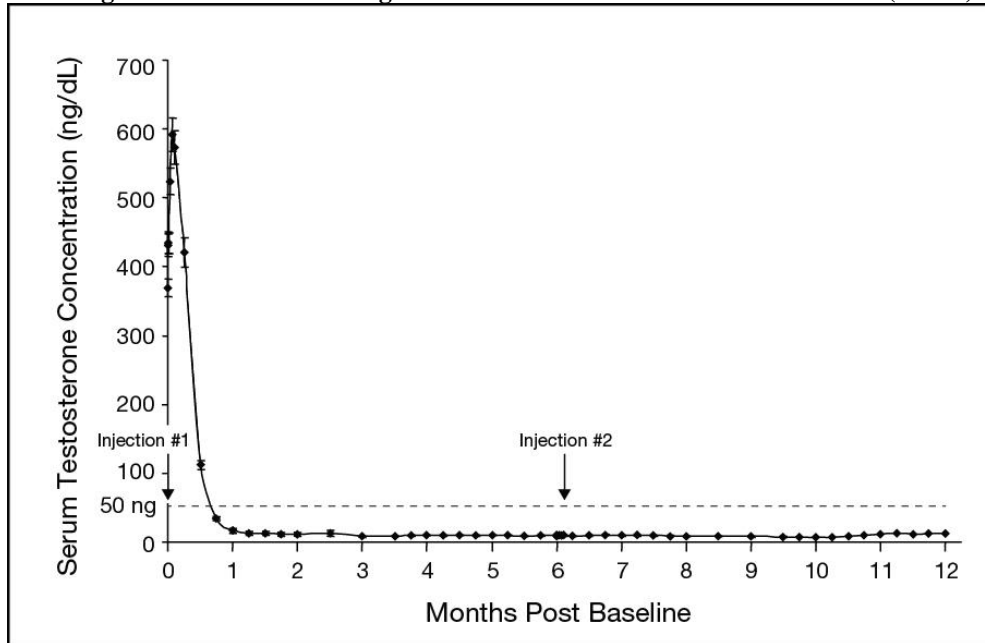


Figure 4. ELIGARD 45 mg Mean Serum Testosterone Concentrations (n=103)



Serum PSA decreased in all patients in all studies whose Baseline values were elevated above the normal limit. Refer to Table 8 for a summary of the effectiveness of ELIGARD in reducing serum PSA values.

Table 8. Effect of ELIGARD on Patient Serum PSA Values

ELIGARD	7.5 mg	22.5 mg	30 mg	45 mg
Mean PSA reduction at study conclusion	94%	98%	86%	97%
Patients with normal PSA at study conclusion*	94%	91%	93%	95%

*Among patients who presented with elevated levels at Baseline

Other secondary efficacy endpoints evaluated included WHO performance status, bone pain, urinary pain and urinary signs and symptoms. Refer to Table 9 for a summary of these endpoints.

Table 9. Secondary Efficacy Endpoints

ELIGARD		7.5 mg	22.5 mg	30 mg	45 mg
Baseline	WHO Status = 0 ¹	88%	94%	90%	90%
	WHO Status = 1 ²	11%	6%	10%	7%
	WHO Status = 2 ³	-	-	-	3%
	Mean bone pain ⁴ (range)	1.22 (1-9)	1.20 (1-9)	1.20 (1-7)	1.38 (1-7)
	Mean urinary pain (range)	1.12 (1-5)	1.02 (1-2)	1.01 (1-2)	1.22 (1-8)
	Mean urinary signs and symptoms (range)	Low	1.09 (1-4)	Low	Low
	Number of patients with prostate abnormalities	102 (85%)	96 (82%)	66 (73%)	89 (80%)
		Month 6	Month 6	Month 8	Month 12
Follow-up	WHO status = 0	Unchanged	96%	87%	94%
	WHO status = 1	Unchanged	4%	12%	5%
	WHO status = 2	-	-	1%	1%
	Mean bone pain (range)	1.26 (1-7)	1.22 (1-5)	1.19 (1-8)	1.31 (1-8)
	Mean urinary pain (range)	1.07 (1-8)	1.10 (1-8)	1.00 (1-1)	1.07 (1-5)
	Mean urinary signs and symptoms (range)	Modestly decreased	1.18 (1-7)	Modestly decreased	Modestly decreased
	Number of patients with prostate abnormalities	77 (64%)	76 (65%)	54 (60%)	60 (58%)
<ol style="list-style-type: none"> 1. WHO status = 0 classified as “fully active.” 2. WHO status = 1 classified as “restricted in strenuous activity but ambulatory and able to carry out work of a light or sedentary nature.” 3. WHO status = 2 classified as “ambulatory but unable to carry out work activities.” 4. Pain score scale: 1 (no pain) to 10 (worst pain possible). 					

16 HOW SUPPLIED/STORAGE AND HANDLING

How Supplied

ELIGARD is supplied as a single-dose, two syringe-mixing system with a sterile safety needle and cap. ELIGARD is available as follows (Table 10):

Table 10. ELIGARD Product Presentations

ELIGARD strength	NDC number	Description of Syringe A with the delivery system	Description of Syringe B with leuprolide acetate	Description of the suspension after mixing
7.5 mg	62935-756-80	Light tan to tan, clear, viscous solution	White to off white powder	Light tan to tan
22.5 mg	62935-227-10	Colorless to pale yellow, clear viscous solution	White to off white powder	Colorless to pale yellow
30 mg	62935-306-40	Colorless to pale yellow, clear viscous solution	White to off white powder	Colorless to pale yellow
45 mg	62935-461-50	Colorless to pale yellow, clear viscous solution	White to off white powder	Colorless to pale yellow

Storage

Store at 2°C to 8°C (36°F to 46°F)

Once outside the refrigerator this product may be stored in its original packaging at room temperature 15°C to 30°C (59°F to 86°F) for up to eight weeks prior to mixing and administration.

17 PATIENT COUNSELING INFORMATION

Hypersensitivity

- Inform patients that if they have experienced hypersensitivity with other GnRH agonist drugs like ELIGARD, ELIGARD is contraindicated [*see Contraindications (4)*].

Tumor Flare

- Inform patients that ELIGARD can cause tumor flare during the first weeks of treatment. Inform patients that the increase in testosterone can cause an increase in urinary symptoms or pain. Advise patients to contact their healthcare provider if ureteral obstruction, spinal cord compression, paralysis, or new or worsened symptoms occur after beginning ELIGARD treatment [*see Warnings and Precautions (5.1)*].

Hyperglycemia and Diabetes

- Advise patients that there is an increased risk of hyperglycemia and diabetes with ELIGARD therapy. Inform patients that periodic monitoring for hyperglycemia and diabetes is required when being treated with ELIGARD [*see Warnings and Precautions (5.3)*].

Cardiovascular Disease

- Inform patients that there is an increased risk of myocardial infarction, sudden cardiac death, and stroke with ELIGARD treatment. Advise patients to immediately report signs and symptoms associated with these events to their healthcare provider for evaluation [*see Warnings and Precautions (5.4)*].

Injection Site Reactions

- Inform patients that injection site related adverse reactions may occur such as transient burning/stinging, pain, bruising, and redness. Advise patients to contact their healthcare provider if they experience rash or severe injection site reactions [*see Adverse Reactions (6.1)*].

Urogenital Disorders

- Advise patients that ELIGARD may cause impotence.

Infertility

- Inform patients that ELIGARD may cause infertility [*see Use In Specific Populations (8.3)*].

Manufactured by: Tolmar, Fort Collins, CO 80526

©2024 Tolmar

04006512 Rev. 4 05/2024

INSTRUCTIONS FOR USE

Follow the detailed instructions below to ensure correct preparation of ELIGARD prior to administration:

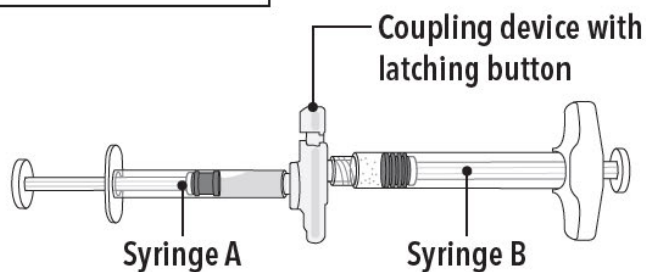
Step 1

Use aseptic technique throughout the procedure. Gloves are recommended during mixing and administration.

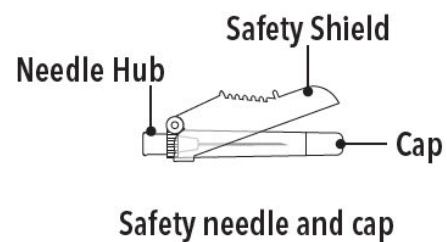
Allow the product to reach room temperature before mixing. Once mixed, the product must be administered within 30 minutes or it should be discarded.

On a clean field open the tray by tearing off the foil from the corner and remove the contents. Discard the desiccant pack. Remove the pre-connected syringe system from the tray. Open the sterile safety needle package by peeling back the paper tab. **Note:** Syringe A and Syringe B should not be lined-up yet. The product should only be administered with the co-packaged, sterile safety needle.

Tray Contents



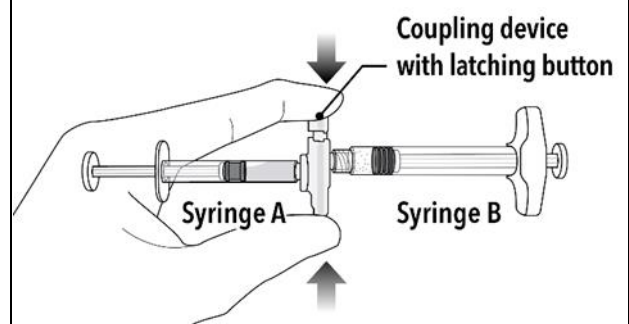
Under the Tray



Step 2

Grasp the latching button on the coupling device with your finger and thumb and press until you hear a snapping sound. The two syringes will be aligned.

Do not bend the pre-connected syringe system.

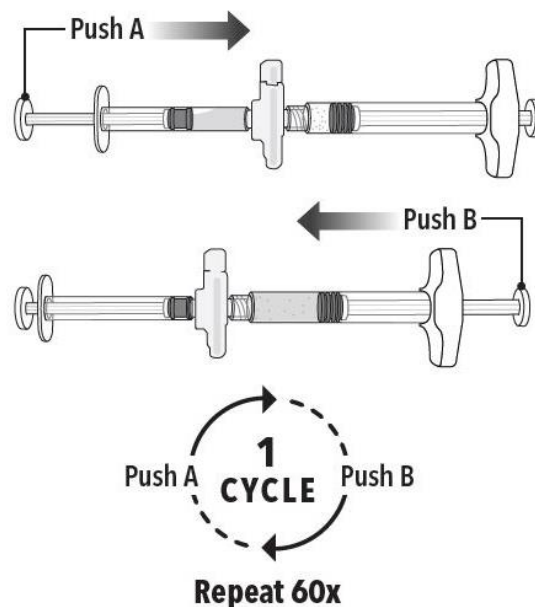


Step 3

Holding the syringes in a horizontal position, transfer the liquid contents of Syringe A into the leuprolide acetate powder contained in Syringe B. **Thoroughly mix the product for 60 cycles by pushing the contents back and forth between both syringes to obtain a uniform suspension.**

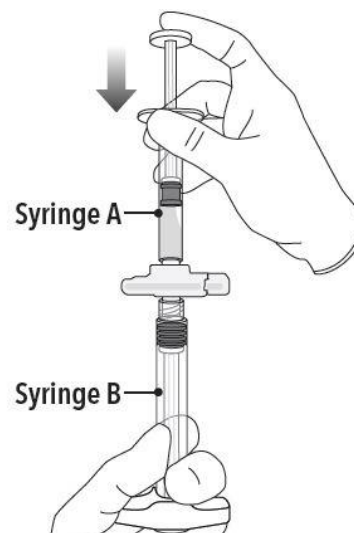
- A cycle is one push of the Syringe A plunger and one push of the Syringe B plunger.
- When thoroughly mixed, the suspension will appear light tan to tan (ELIGARD 7.5 mg) or colorless to pale yellow (ELIGARD 22.5 mg, 30 mg, and 45 mg).

Note: Product must be mixed as described; shaking will NOT provide adequate mixing. Do not bend.



Step 4

After mixing, hold the syringes vertically (upright) with Syringe B (wide syringe) on the bottom. The syringes should remain securely coupled. Transfer all of the mixed product into Syringe B by depressing the Syringe A plunger and slightly withdrawing the Syringe B plunger.

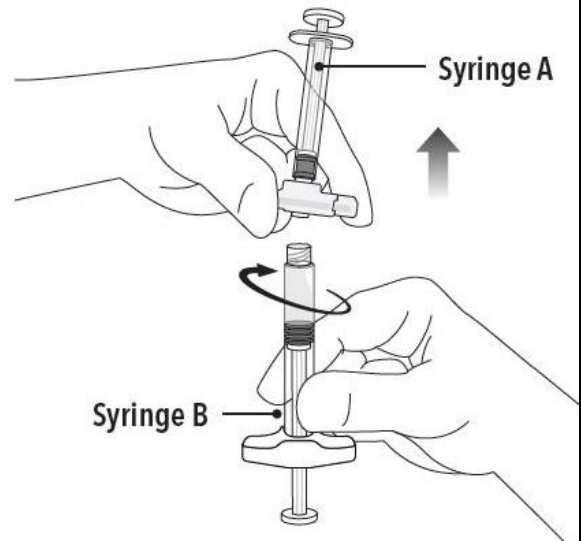


Step 5

While ensuring the Syringe A plunger is fully pushed down, hold the coupling device and unscrew Syringe B. This will disconnect Syringe B from the coupling device. Syringe A will remain attached to the coupling device.

Note: Small air bubbles will remain in the formulation – this is acceptable.

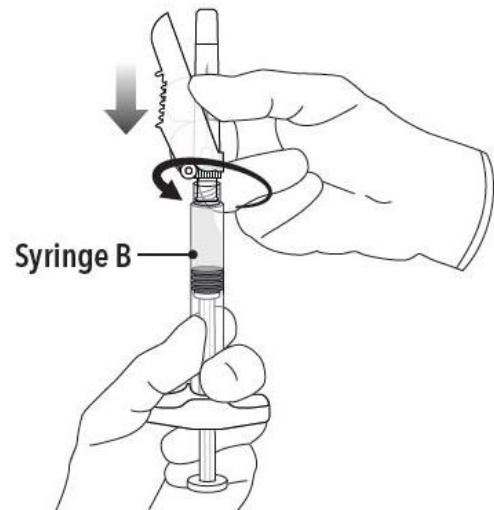
Do not purge the air bubbles from Syringe B as product may be lost!



Step 6

Continue to hold Syringe B upright with the open end at the top. Hold back the white plunger on Syringe B to prevent loss of the product, and attach the safety needle and cap (the safety needle is located under the tray). Gently screw clockwise with approximately a three-quarter turn until the safety needle and cap are secure.

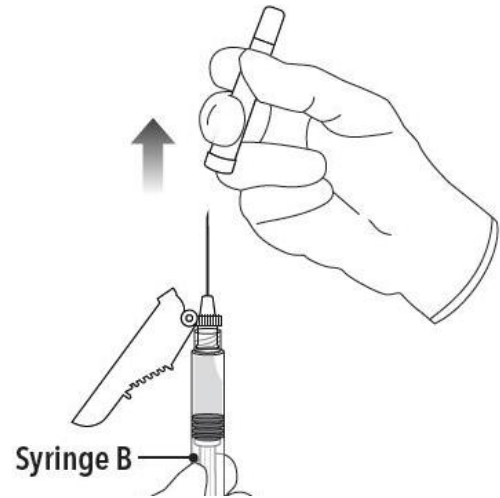
Do not overtighten, as the needle hub may become damaged which could result in leakage of the product during injection. The safety shield may also be damaged if the safety needle and cap are screwed with too much force.



Step 7

Move the safety shield away from the needle and towards the syringe.

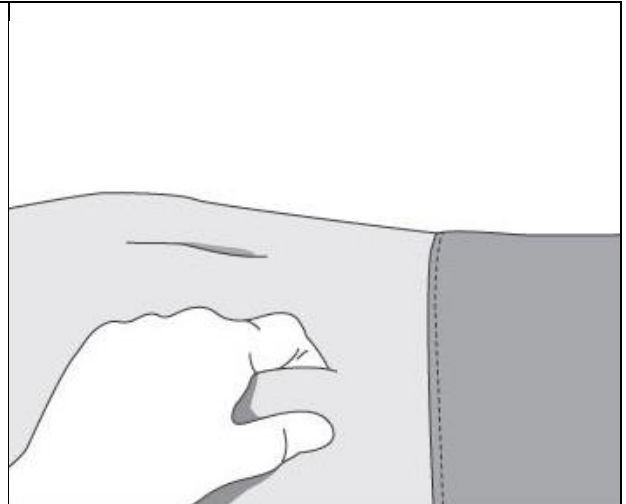
Pull off the cap immediately prior to administration.



Note: Should the needle hub appear to be damaged, or leak, the product should NOT be used. The damaged safety needle and cap should NOT be replaced and the product should NOT be injected. In the event of damage to the needle hub, use a new replacement ELIGARD carton.

Follow the detailed instructions below to ensure correct administration of ELIGARD:

1. Select an injection site on the abdomen, upper buttocks, or another location with adequate amounts of subcutaneous tissue that does not have excessive pigment, nodules, lesions, or hair and hasn't recently been used.
2. Cleanse the injection-site area with an alcohol swab (not enclosed).
3. Using the thumb and forefinger, grab and bunch the area of skin around the injection site.

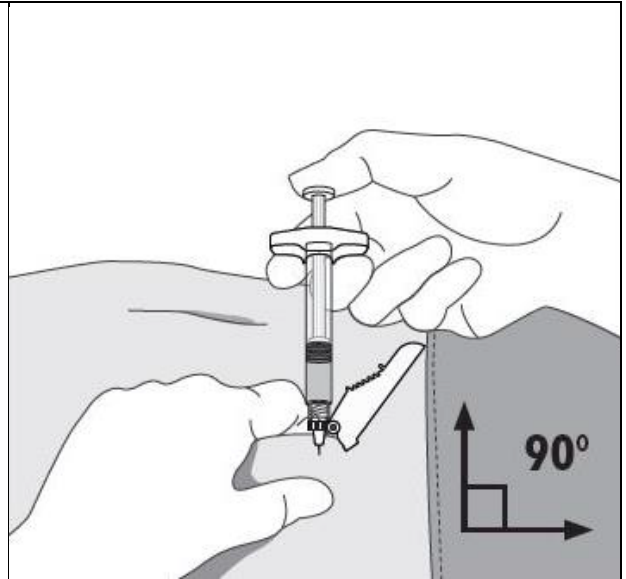


4. Using your dominant hand, insert the needle quickly at a 90° angle to the skin surface. The depth of penetration will depend on the amount and fullness of the subcutaneous tissue and the length of the needle. After the needle is inserted, release the skin.

5. Inject the drug using a slow, steady push and press down on the plunger until the syringe is empty.

Make sure all the drug has been injected before removing the needle.

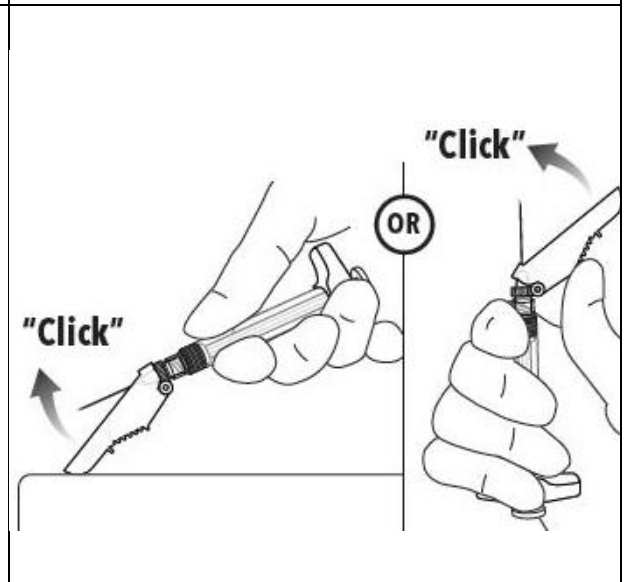
6. Withdraw the needle quickly at the same 90° angle used for insertion.



7. Immediately following the withdrawal of the needle, activate the safety shield using a finger/thumb or flat surface and push until it completely covers the needle tip and locks into place.

8. An audible and tactile “click” verifies a locked position.

9. Check to confirm the safety shield is fully engaged. Discard all components safely in an appropriate biohazard container.

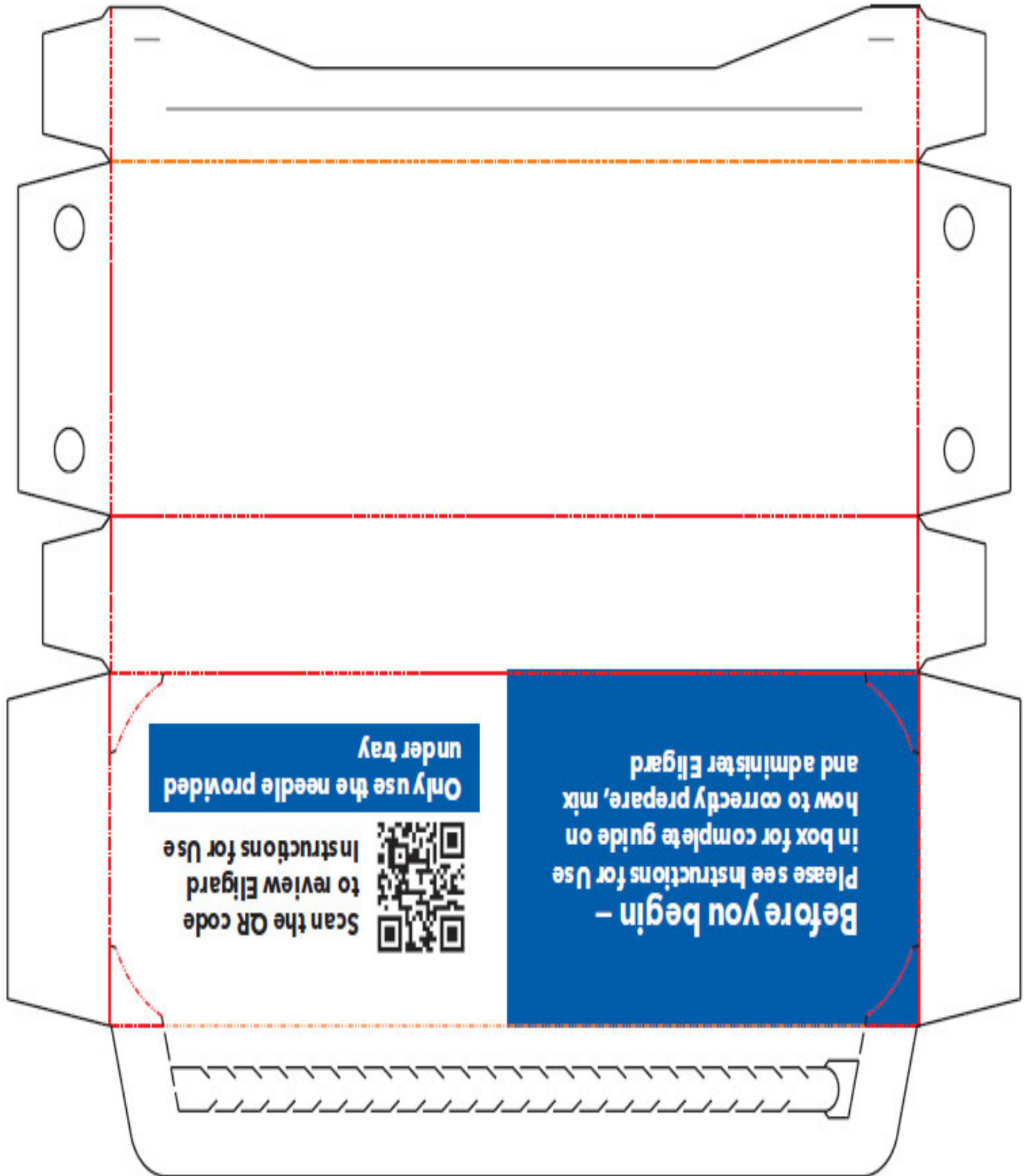


©2024 Tolmar

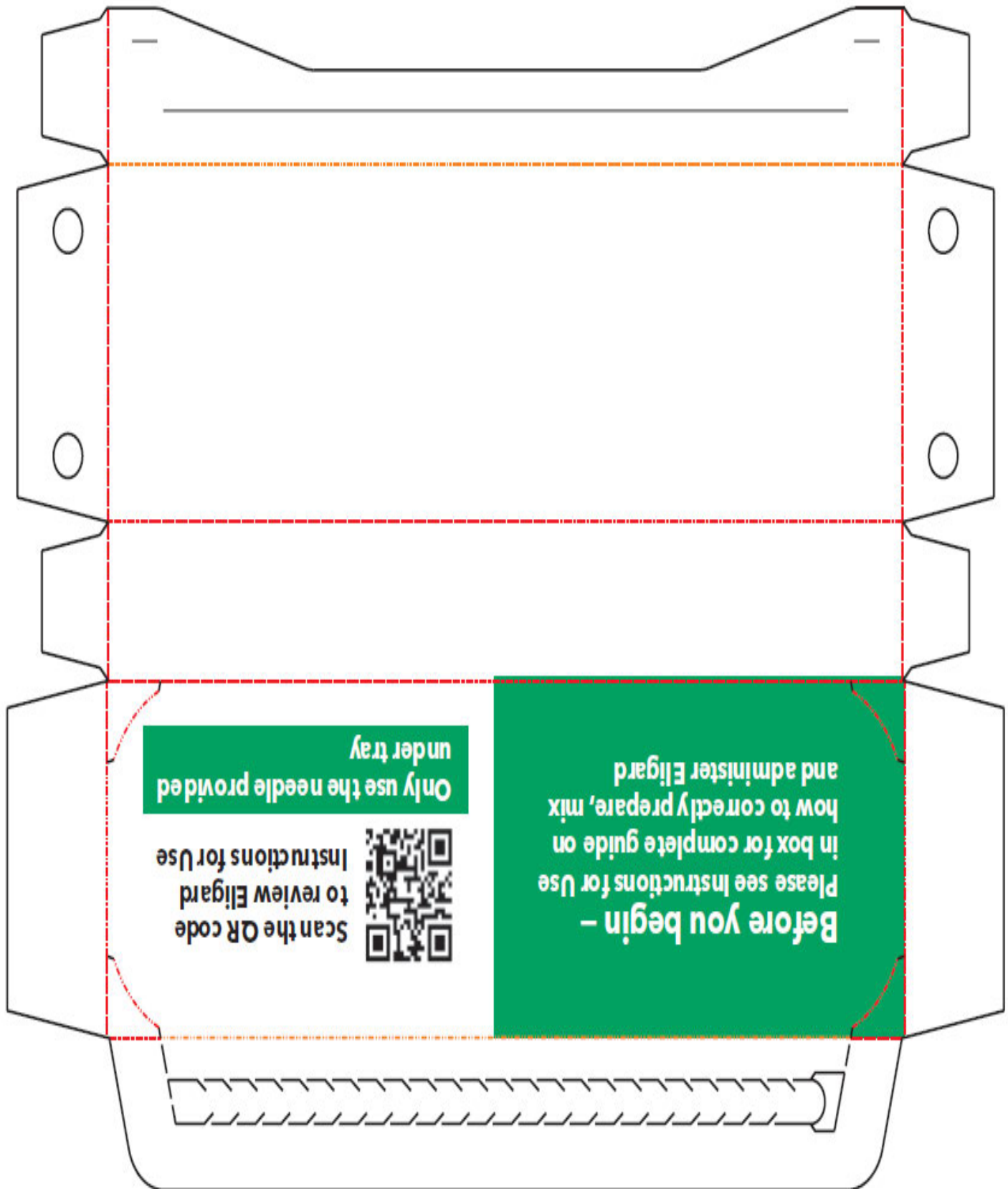
Manufactured by: Tolmar, Fort Collins, CO 80526

04006512 Rev. 4 05/2024

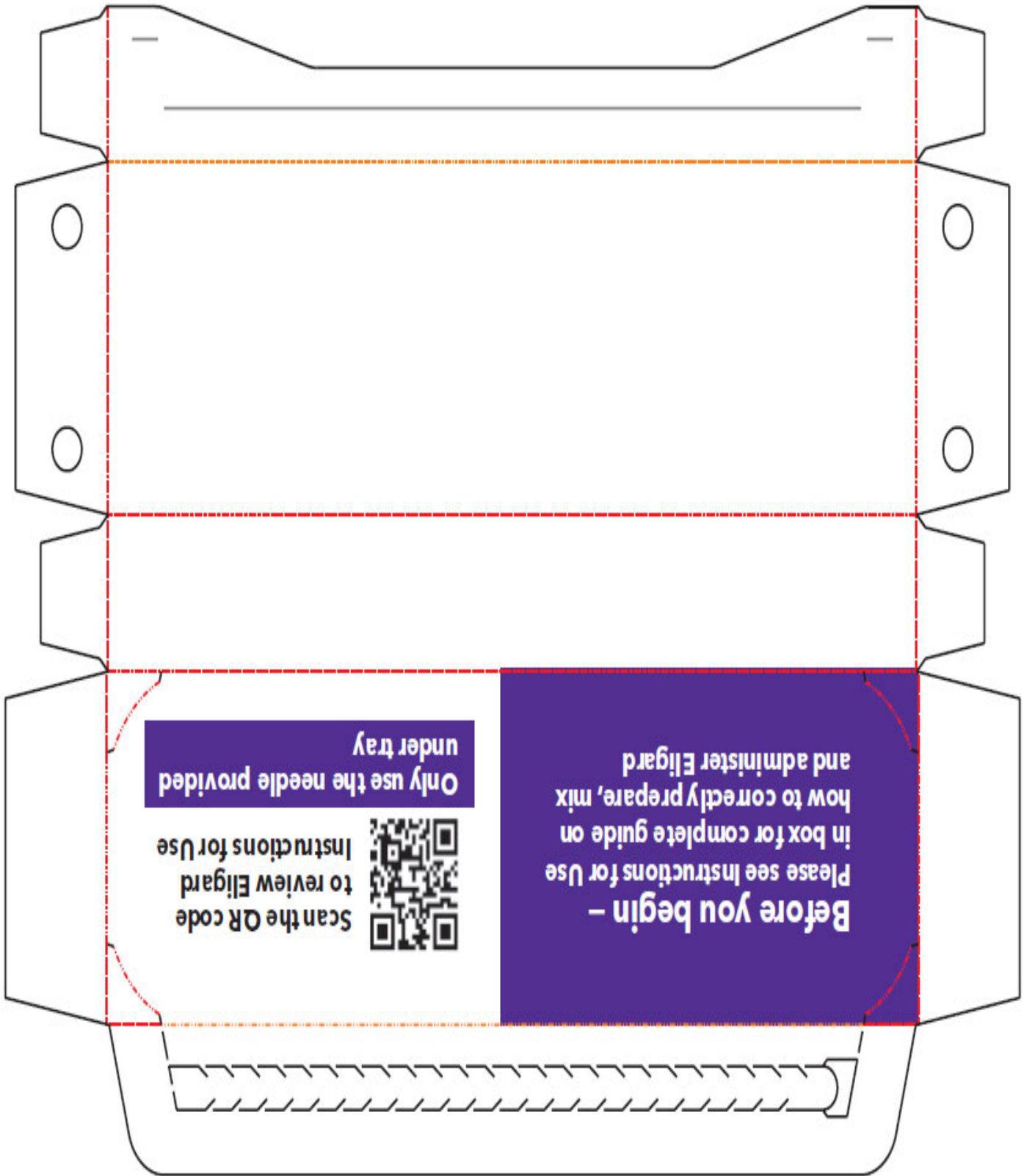




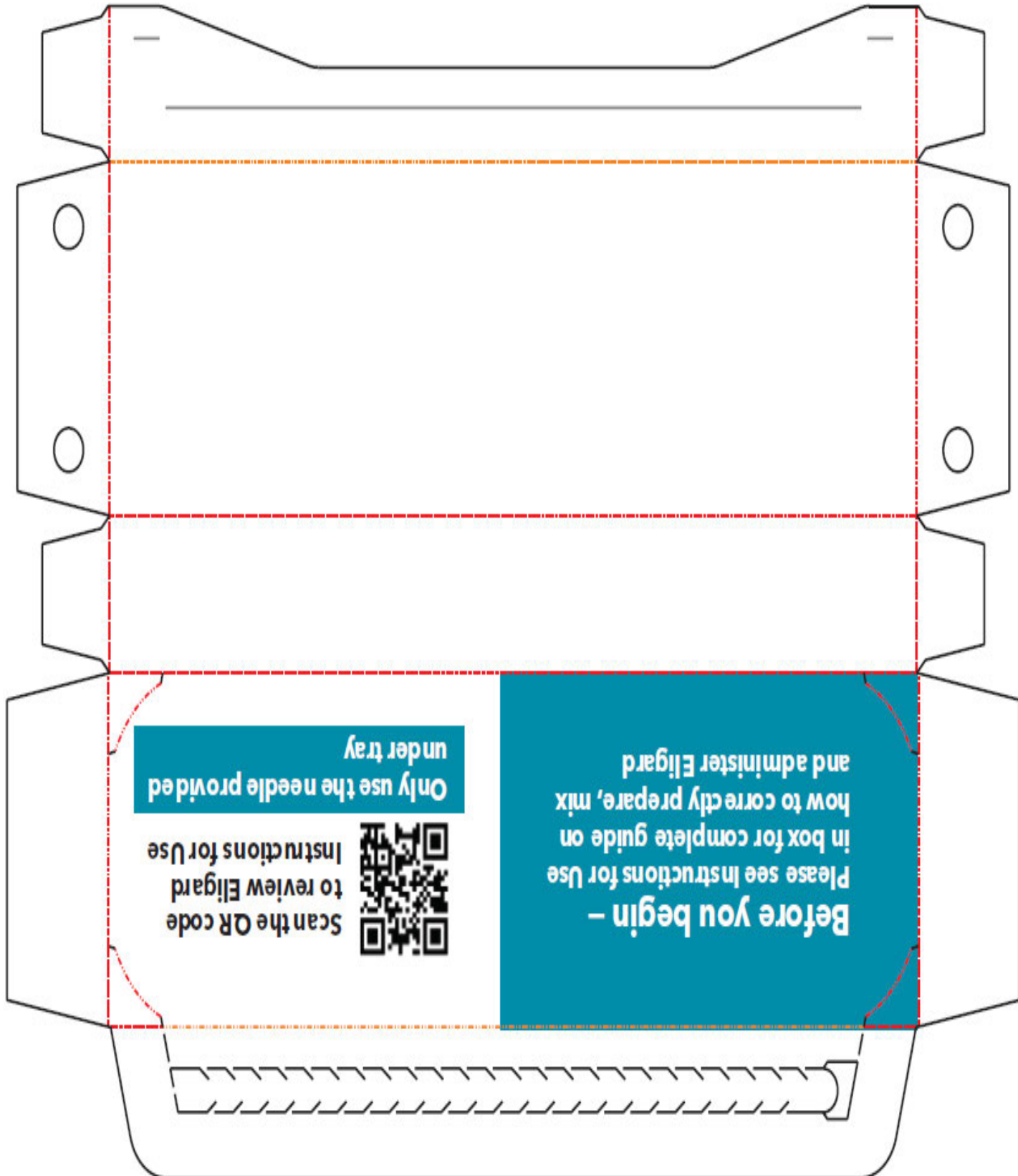












NDC 62935-756-80 Rx Only

Eligard[®]
(leuprolide acetate) for injectable suspension

7.5 mg | EVERY MONTH

Sterile | For subcutaneous injection only
Must be reconstituted before use

This tray contains:

- Pre-connected syringe system and desiccant pack
- **Syringe A:** 1 syringe of Diluent for Eligard containing Delivery System 378 mg
- **Syringe B:** 1 syringe of Eligard (leuprolide acetate) powder, 13.1 mg
- 20-gauge safety needle, provided **under tray (DO NOT discard)**

Store refrigerated 2°C to 8°C (36°F to 46°F).
Product must be at room temperature prior to mixing. Do not remove syringe from tray until ready to use.

See Prescribing Information for reconstitution and administration procedures.

Manufactured by:
Tolmar, Fort Collins, CO 80526
04006183 Rev.2 12/23

NDC 62935-227-10 Rx Only

Eligard[®]
(leuprolide acetate) for injectable suspension

22.5 mg | EVERY 3 MONTHS

Sterile | For subcutaneous injection only
Must be reconstituted before use

This tray contains:

- Pre-connected syringe system and desiccant pack
- **Syringe A:** 1 syringe of Diluent for Eligard containing Delivery System 490 mg
- **Syringe B:** 1 syringe of Eligard (leuprolide acetate) powder, 32.6 mg
- 20-gauge safety needle, provided **under tray (DO NOT discard)**

Store refrigerated 2°C to 8°C (36°F to 46°F).
Product must be at room temperature prior to mixing. Do not remove syringe from tray until ready to use.

See Prescribing Information for reconstitution and administration procedures.

Manufactured by:
Tolmar, Fort Collins, CO 80526
04006182 Rev.2 12/23

NDC 62935-306-40 Rx Only

Eligard[®]
(leuprolide acetate) for injectable suspension

30 mg | EVERY 4 MONTHS

Sterile | For subcutaneous injection only
Must be reconstituted before use

This tray contains:

- Pre-connected syringe system and desiccant pack
- **Syringe A:** 1 syringe of Diluent for Eligard containing Delivery System 624 mg
- **Syringe B:** 1 syringe of Eligard (leuprolide acetate) powder, 39.7 mg
- 20-gauge safety needle, provided **under tray (DO NOT discard)**

Store refrigerated 2°C to 8°C (36°F to 46°F).
Product must be at room temperature prior to mixing. Do not remove syringe from tray until ready to use.

See Prescribing Information for reconstitution and administration procedures.

Manufactured by:
Tolmar, Fort Collins, CO 80526
04006180 Rev.2 12/23

NDC 62935-461-50 Rx Only

Eligard[®]
(leuprolide acetate) for injectable suspension

45 mg | EVERY 6 MONTHS

Sterile | For subcutaneous injection only
Must be reconstituted before use

This tray contains:

- Pre-connected syringe system and desiccant pack
- **Syringe A:** 1 syringe of Diluent for Eligard containing Delivery System 436 mg
- **Syringe B:** 1 syringe of Eligard (leuprolide acetate) powder, 63.7 mg
- 18-gauge safety needle, provided **under tray (DO NOT discard)**

Store refrigerated 2°C to 8°C (36°F to 46°F).
Product must be at room temperature prior to mixing. Do not remove syringe from tray until ready to use.

See Prescribing Information for reconstitution and administration procedures.

Manufactured by:
Tolmar, Fort Collins, CO 80526
04006181 Rev.2 12/23



Ramesh
Raghavachari

Digitally signed by Ramesh Raghavachari
Date: 5/21/2024 04:21:29PM
GUID: 502d0913000029f375128b0de8c50020